

PRODUCT WARRANTY

WARRANTY. PCTEL, Inc. ("PCTEL") represents and warrants that the Products furnished hereunder shall be free from defects in material and workmanship for a period of two (2) years (except for MPRC and MPRD parabolic reflector antennas, and Bluewave series antennas, which are warranted for five (5) years) from the date of shipment by PCTEL under normal use and operation. PCTEL's sole and exclusive obligation under the foregoing warranty shall be, at its option, to repair or replace any defective Product that fails during the warranty period. The expense of removal and reinstallation of any item is not included in this warranty. THE FOREGOING WARRANTY IS EXCLUSIVE AND IN LIEU OF ALL OTHER WARRANTIES, EXPRESS OR IMPLIED, INCLUDING THE IMPLIED WARRANTIES OF MERCHANTABILITY AND FITNESS FOR A PARTICULAR PURPOSE AND ANY WARRANTIES ARISING FROM A COURSE OF DEALING, USAGE OR TRADE PRACTICE WITH RESPECT TO THE PRODUCTS. Repair or replacement in the manner provided herein shall be the sole and exclusive remedy of Buyer for breach of warranty and shall constitute fulfillment of all liabilities of PCTEL with respect to the quality and performance of the Product. PCTEL shall have no obligation to make repairs or replacement necessitated by catastrophe, fault, negligence, misuse, abuse, or accident by Buyer, Buyer's customers or any other users. PCTEL DOES NOT WARRANT THAT THE OPERATION OF THE PRODUCTS IS ERROR-FREE OR THAT OPERATION WILL BE UNINTERRUPTED. IN NO EVENT SHALL PCTEL BE RESPONSIBLE FOR DAMAGES OR CLAIMS OF ANY NATURE OR DESCRIPTION RELATING TO: (i) SYSTEM PERFORMANCE, INCLUDING COVERAGE; (ii) BUYER'S SELECTION OF PRODUCTS FOR BUYER'S APPLICATION; AND/OR (iii) FAILURE OF PRODUCTS TO MEET GOVERNMENT OR REGULATORY REQUIREMENTS. The foregoing warranty shall apply only if: (i) the Product has been properly installed and used at all times in accordance, and in all material respects, with the applicable Product documentation; (ii) no modification, alteration or addition has been made to the Product by persons other than PCTEL or PCTEL's authorized representatives or otherwise approved by PCTEL; and (iii) the Product has not been subjected to misuse, neglect or unusual physical, electrical or electromagnetic stress, or some other type of accident.

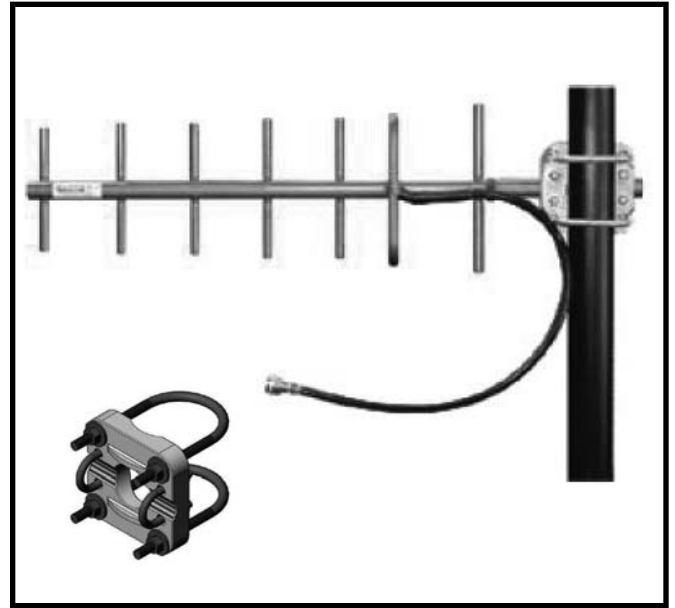
WARRANTY PROCEDURES: In the event of a warranty claim, Buyer must contact PCTEL to arrange for Product return. No Product will be accepted for replacement or repair without first obtaining a Return Material Authorization (RMA) number from PCTEL Customer Service by telephone: 630.372.6800 or email: antenna.techsupport@pctel.com. PCTEL reserves the right to inspect all defective Products. Product returned without an RMA number will not be processed and will be returned to Buyer freight collect. The warranty period of any repaired or replaced Product shall not extend beyond its original term.

Equipment to be repaired or replaced under warranty is to be returned, freight prepaid, to the following address with the assigned RMA number quoted on the box:

PCTEL, Inc., Attn: RMA Coordinator
471 Brighton Drive
Bloomington, Illinois 60108 U.S.A.



471 Brighton Drive
Bloomington, IL 60108



BLUEWAVE BWC1001 YAGI CLAMP INSTALLATION INSTRUCTIONS

© PCTEL, Inc.
All Rights Reserved

MIS-BWC1001

Safety Guidelines

1. Antenna installation should only be performed by trained personnel.
2. Always wear the appropriate safety devices, and never climb on an antenna. Observe electrical shock hazard caution.
3. Keep antenna clear of all electrical transmission lines.

Antenna Installation Guidelines

1. Upon receipt of antenna, check contents for damage. Notify the carrier immediately if any of the contents are missing or damaged.
2. Fix antenna securely to tower, ensuring correct polarization with feed-line down.
3. Always weatherproof the cable connection. Failure to do so will degrade antenna signal over time.
4. The red dot denotes up, ensuring proper antenna performance.

Antenna Series Using BWC1001 Clamps

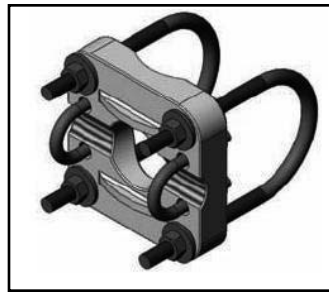
BGY450K	BMYP690G	BMYP890G	BMYPD450G	BMYPD806K
BMYP1350H	BMYP690K	BMYP890K	BMYPD450K	BMYPD806M
BMYP1350K	BMYP745G	BMYP890M	BMYPD451K	BMYPD890D
BMYP403G	BMYP745K	BGYD450K	BMYPD690G	BMYPD890G
BMYP403K	BMYP806D	BMYPD1350H	BMYPD690K	BMYPD890K
BMYP450D	BMYP806G	BMYPD1350K	BMYPD745G	BMYPD890M
BMYP450G	BMYP806K	BMYPD403G	BMYPD745K	
BMYP450K	BMYP806M	BMYPD403K	BMYPD806D	
BMYP451K	BMYP890D	BMYPD450D	BMYPD806G	

Torque for Non-Lubricated Steel Bolts

Thread	Torque (ft. lbs.)
1/4-20NC	8
5/16-18NC	17
3/8-16NC	30
1/2-13NC	75



BWC1001 yagi clamp, fits mast of 0.5" - 0.84" OD



BWC1001 reversible U-bolts fit pipe mounts 1.25" - 2.4" OD

